

# Sound Insulation Prediction (v7.0.6)

Program copyright Marshall Day Acoustics 2012



- Key No. 2503

Margin of error is generally within  $R_w \pm 3$  dB

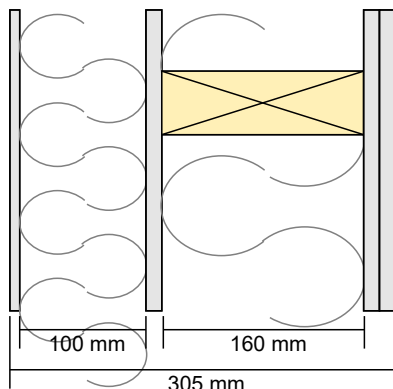
Job Name Streif Walls, Acoustic Modelling

Job No.: 4852

Date: 18 Aug 20

Initials: PD

File Name: Wall Type 2B.ixl



**R<sub>w</sub> 47 dB**

C -3 dB

C<sub>tr</sub> -6 dB

## System description

Panel 1 Outer layer: 1 x 8.0 mm Sto Rendering- (m=0.0 kg/m<sup>2</sup>, f<sub>c</sub>=181 Hz, Damping=0.01) Profile

Cavity: None @ 600 mm , Infill Rockwool (60kg/m<sup>3</sup>) Thickness 100 mm

Panel 2 Inner layer: 1 x 12.5 mm Gypsum Rigidur H- (m=15.0 kg/m<sup>2</sup>, f<sub>c</sub>=4009 Hz, Damping=0.01) Profile

Cavity: Timber stud @ 600 mm , Infill Rockwool (60kg/m<sup>3</sup>) Thickness 160 mm

Panel 3 Inner layer: 2 x 12.5 mm Gypsum Rigidur H- (m=30.0 kg/m<sup>2</sup>, f<sub>c</sub>=4009 Hz, Damping=0.01) Profile

Mass-air-mass resonant frequency =47 Hz , 2106

Panel Size 2.7x4 m

frequency (Hz)	TL(dB)	TL(dB)
50	11	
63	22	16
80	30	
100	34	
125	36	35
160	36	
200	36	
250	39	38
315	42	
400	44	
500	47	39
630	34	
800	41	
1000	46	44
1250	51	
1600	56	
2000	59	59
2500	67	
3150	67	
4000	60	64
5000	68	

