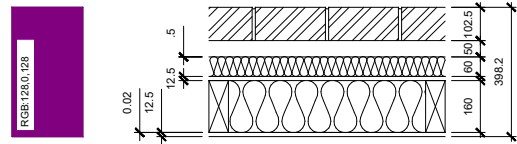


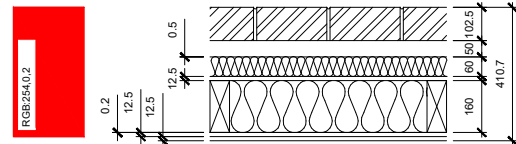
EXTERNAL WALL TYPES

EXTERNAL TYPE 1A



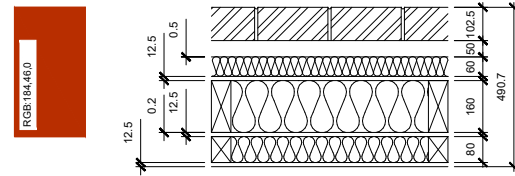
External Wall Brick Cavity
 U-Value = 0.17W/m²K (including cavity & brickwork by others)
 Wall Depth = 398.2mm (including 50mm cavity & 102.5mm brickwork by others)
 Panel Spec = 102.5mm facing brickwork + 50mm cavity + 0.5mm breather membrane + 60mm mineral wool slab insulation (λ = 0.035) + 12.5mm British Gypsum Rigidur H square edge board + 160mm treated solid timber frame with 160mm mineral wool insulation (λ = 0.035) between + 0.2mm vapour control layer + 12.5 mm British Gypsum Rigidur H tapered edge board.

EXTERNAL TYPE 1B



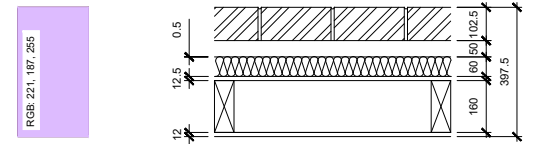
External Wall Brick Cavity
 U-Value = 0.17W/m²K (including cavity & brickwork by others)
 Wall Depth = 410.7mm (including 50mm cavity & 102.5mm brickwork by others)
 Panel Spec = 102.5mm facing brickwork + 50mm cavity + 0.5mm breather membrane + 60mm mineral wool slab insulation (λ = 0.035) + 12.5mm British Gypsum Rigidur H square edge board + 160mm treated solid timber frame with 160mm mineral wool insulation (λ = 0.035) between + 0.2mm Vapour control layer + 12.5mm British Gypsum Rigidur H square edge board + 12.5 mm tapered edge board.

EXTERNAL TYPE 1C



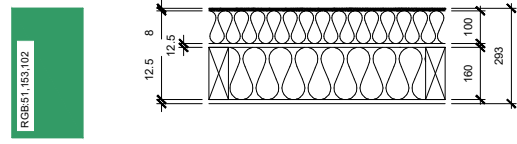
External Wall Brick Cavity
 U-Value = 0.12W/m²K (including cavity & brickwork by others)
 Wall Depth = 490.7mm (including 50mm cavity & 102.5mm brickwork by others)
 Panel Spec = 102.5mm facing brickwork + 50mm cavity + 0.5mm breather membrane + 60mm mineral wool slab insulation (λ = 0.035) + 12.5mm British Gypsum Rigidur H square edge board + 160mm treated solid timber frame with 160mm mineral wool insulation (λ = 0.035) between + 0.2mm vapour control layer + 12.5mm British Gypsum Rigidur H square edge board + 80mm treated solid timber frame with 80mm mineral wool insulation (λ = 0.035) between + 12.5 mm British Gypsum Rigidur H tapered edge board.

EXTERNAL TYPE 1 PARAPET



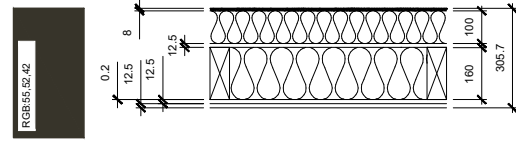
External Wall Brick Cavity
 U-Value = N/A
 Wall Depth = 397.5mm (including 50mm cavity & 102.5mm brickwork by others)
 Panel Spec = 102.5mm facing brickwork + 50mm cavity + 0.5mm breather membrane + 60mm mineral wool slab insulation (λ = 0.035) + 12.5mm British Gypsum Rigidur H square edge board + 160mm treated solid timber frame + 12mm plywood.

EXTERNAL TYPE 2A



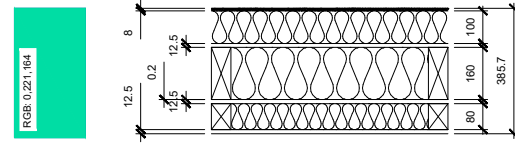
External Wall Render
 U-Value = 0.16W/m²K
 Wall Depth = 293mm
 Panel Spec = 8mm polymer render system + 100mm Mineral Wool Lamella insulation (λ = 0.035) + 12.5mm British Gypsum Rigidur H square edge board + 160mm treated solid timber frame with 160mm mineral wool insulation (λ = 0.035) between + 0.2mm vapour control layer + 12.5mm British Gypsum Rigidur H tapered edge board.

EXTERNAL TYPE 2B



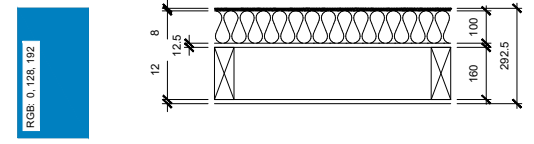
External Wall Render
 U-Value = 0.16W/m²K
 Wall Depth = 305.7mm
 Panel Spec = 8mm polymer render system + 100mm Mineral Wool Lamella insulation (λ = 0.035) + 12.5mm British Gypsum Rigidur H square edge board + 160mm treated solid timber frame with 160mm mineral wool insulation (λ = 0.035) between + 0.2mm vapour control layer + 12.5mm British Gypsum Rigidur H square edge board + 12.5 mm British Gypsum Rigidur H tapered edge board.

EXTERNAL TYPE 2C



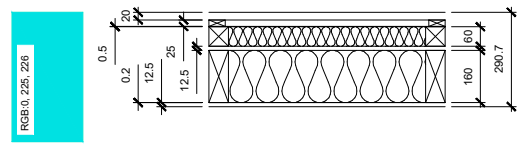
External Wall Render
 U-Value = 0.12W/m²K
 Wall Depth = 385.7mm
 Panel Spec = 8mm polymer render system + 100mm Mineral Wool Lamella insulation (λ = 0.035) + 12.5mm British Gypsum Rigidur H square edge board + 160mm treated solid timber frame with 160mm mineral wool insulation (λ = 0.035) between + 0.2mm vapour control layer + 12.5mm British Gypsum Rigidur H square edge board + 80mm treated solid timber frame with 80mm mineral wool insulation (λ = 0.035) between + 12.5 mm British Gypsum Rigidur H tapered edge board.

EXTERNAL TYPE 2 PARAPET



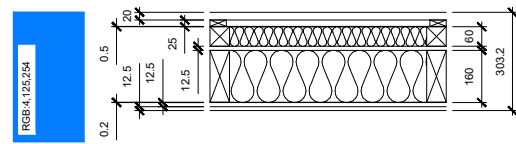
External Wall Render
 U-Value = N/A
 Wall Depth = 292.5mm
 Panel Spec = 8mm polymer render system + 100mm Mineral Wool Lamella insulation (λ = 0.035) + 12.5mm British Gypsum Rigidur H square edge board + 160mm treated solid timber frame + 12 mm plywood.

EXTERNAL TYPE 3A



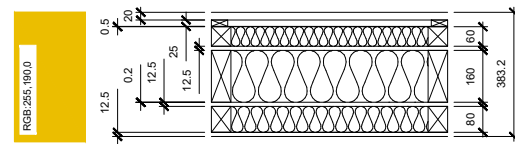
External Wall Cladding (eg timber)
 U-Value = 0.19W/m²K (including timber battens and cladding by others)
 Wall Depth = 290.7mm (including timber battens and cladding by others)
 Panel Spec = 20mm horizontal timber cladding + 25 x 50mm vertical timber battens + 0.5mm breather membrane + 60mm mineral wool slab insulation (λ = 0.035) between 60 x 60mm timber frame + 12.5mm British Gypsum Rigidur H square edge board + 160mm treated solid timber frame with 160mm mineral wool insulation (λ = 0.035) between + 0.2mm vapour control layer + 12.5mm British Gypsum Rigidur H tapered edge board.

EXTERNAL TYPE 3B



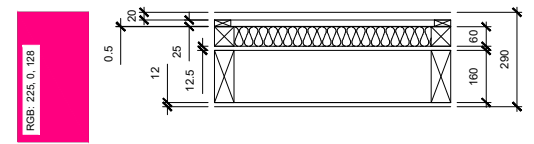
External Wall Cladding (eg timber)
 U-Value = 0.19W/m²K (including timber battens and cladding by others)
 Wall Depth = 303.2mm (including timber battens and cladding by others)
 Panel Spec = 20mm horizontal timber cladding + 25 x 50mm vertical timber battens + 0.5mm breather membrane + 60mm mineral wool slab insulation (λ = 0.035) between 60 x 60mm timber frame + 12.5mm British Gypsum Rigidur H square edge board + 160mm treated solid timber frame with 160mm mineral wool insulation (λ = 0.035) between + 0.2mm vapour control layer + 12.5mm British Gypsum Rigidur H square edge board + 12.5 mm British Gypsum Rigidur H tapered edge board.

EXTERNAL TYPE 3C



External Wall Cladding (eg timber)
 U-Value = 0.12W/m²K (including timber battens and cladding by others)
 Wall Depth = 383.2mm (including timber battens and cladding by others)
 Panel Spec = 20mm horizontal timber cladding + 25 x 50mm vertical timber battens + 0.5mm breather membrane + 60mm mineral wool slab insulation (λ = 0.035) between 60 x 60mm timber frame + 12.5mm British Gypsum Rigidur H square edge board + 160mm treated solid timber frame with 160mm mineral wool insulation (λ = 0.035) between + 0.2mm vapour control layer + 12.5mm British Gypsum Rigidur H square edge board + 80mm treated solid timber frame with 80mm mineral wool insulation (λ = 0.035) between + 12.5 mm British Gypsum Rigidur H tapered edge board.

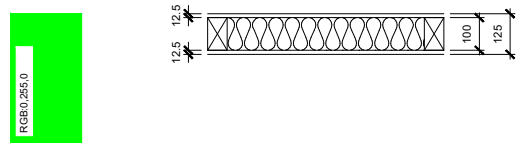
EXTERNAL TYPE 3 PARAPET



External Wall Cladding (eg timber)
 U-Value = N/A
 Wall Depth = 290mm (including timber battens and cladding by others)
 Panel Spec = 20mm horizontal timber cladding + 25 x 50mm vertical timber battens + 0.5mm breather membrane + 60mm mineral wool slab insulation (λ = 0.035) between 60 x 60mm timber frame + 12.5mm British Gypsum Rigidur H square edge board + 160mm treated solid timber frame + 12 mm plywood.

INTERNAL WALL TYPES

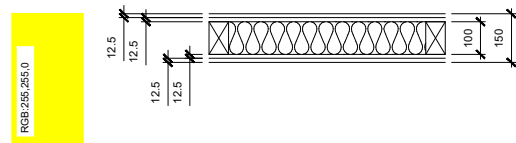
INTERNAL TYPE 1A



125 Standard
 Acoustic Rating = Rw 49 dB (Ctr -6 dB) Duty Rating = Severe
 Fire Rating = 30 mins Wall Depth = 125mm

Panel Spec = 12.5mm British Gypsum Rigidur H tapered edge board + 100mm solid timber frame with 100mm mineral wool insulation (15kg/m³) between + 12.5mm British Gypsum Rigidur H tapered edge board.

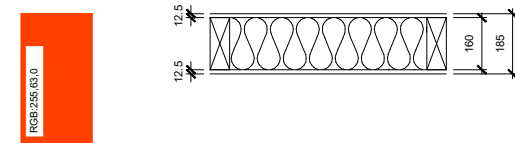
INTERNAL TYPE 1B



150 Fire Rated
 Acoustic Rating = Rw 55 dB (Ctr -4 dB) Duty Rating = Severe
 Fire Rating = 60 mins Wall Depth = 150mm

Panel Spec = 12.5mm British Gypsum Rigidur H tapered edge board + 12.5mm British Gypsum Rigidur H square edge board + 100mm solid timber frame with 100mm mineral wool insulation (15kg/m³) between + 12.5mm British Gypsum Rigidur H square edge board + 12.5mm British Gypsum Rigidur H tapered edge board.

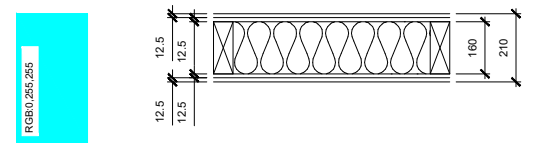
INTERNAL TYPE 2A



185 Structural
 Acoustic Rating = Rw 49 dB (Ctr -5 dB) Duty Rating = Severe
 Fire Rating = 30 mins Wall Depth = 185mm

Panel Spec = 12.5mm British Gypsum Rigidur H tapered edge board + 160mm solid timber frame with 160mm mineral wool insulation (15kg/m³) between + 12.5mm British Gypsum Rigidur H tapered edge board.

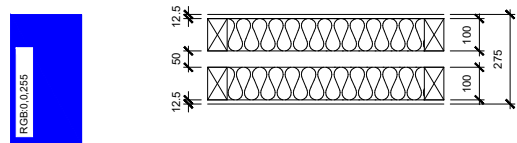
INTERNAL TYPE 2B



210 Structural Fire Rated
 Acoustic Rating = Rw 56 dB (Ctr -5 dB) Duty Rating = Severe
 Fire Rating = 60 mins Wall Depth = 210mm

Panel Spec = 12.5mm British Gypsum Rigidur H tapered edge board + 12.5mm British Gypsum Rigidur H square edge board + 160mm solid timber frame with 160mm mineral wool insulation (15kg/m³) between + 12.5mm British Gypsum Rigidur H square edge board + 12.5mm British Gypsum Rigidur H tapered edge board.

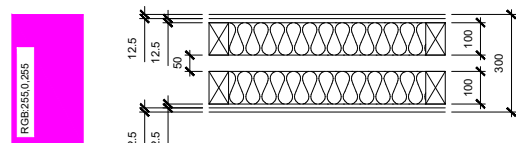
INTERNAL TYPE 3A



275 Acoustic
 Acoustic Rating = Rw 64 dB (Ctr -9 dB) Duty Rating = Severe
 Fire Rating = 30 mins Wall Depth = 275mm

Panel Spec = 12.5mm British Gypsum Rigidur H tapered edge board + 100mm solid timber frame with 100mm mineral wool insulation (15kg/m³) between + 50mm cavity + 100mm solid timber frame with 100mm mineral wool insulation (15kg/m³) between + 12.5mm British Gypsum Rigidur H tapered edge board.

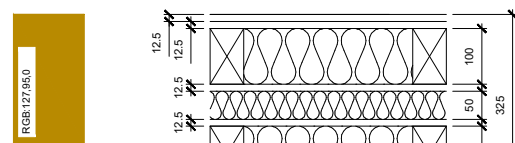
INTERNAL TYPE 3B



300 Acoustic Fire Rated
 Acoustic Rating = Rw 71 dB (Ctr -9 dB) Duty Rating = Severe
 Fire Rating = 60 mins Wall Depth = 300mm

Panel Spec = 12.5mm British Gypsum Rigidur H tapered edge board + 12.5mm British Gypsum Rigidur H square edge board + 100mm solid timber frame with 100mm mineral wool insulation (15kg/m³) between + 50mm cavity + 100mm solid timber frame with 100mm mineral wool insulation (15kg/m³) between + 12.5mm British Gypsum Rigidur H square edge board + 12.5mm British Gypsum Rigidur H tapered edge board.

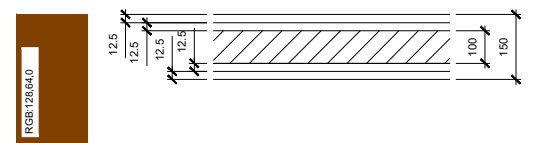
INTERNAL TYPE 4



325 Party Wall
 Acoustic Rating = Rw 81 dB (Ctr -15db) Duty Rating = Severe
 Fire Rating = 60 mins Wall Depth = 325mm

Panel Spec = 12.5mm British Gypsum Rigidur H tapered edge board + 12.5mm British Gypsum Rigidur H square edge board + 100mm solid timber frame with 100mm mineral wool insulation (15kg/m³) between + 12.5mm British Gypsum Rigidur H square edge board + 50mm mineral wool insulation (15kg/m³) in cavity + 12.5mm British Gypsum Rigidur H square edge board + 100mm solid timber frame with 100mm mineral wool insulation (15kg/m³) between + 12.5mm British Gypsum Rigidur H square edge board + 12.5mm British Gypsum Rigidur H tapered edge board.

INTERNAL TYPE 5



150 CLT
 Acoustic Rating = Rw 41 dB (Ctr -3db) Duty Rating = Severe
 Fire Rating = 60 mins Wall Depth = 150mm

Panel Spec = 12.5mm British Gypsum Rigidur H tapered edge board + 12.5mm British Gypsum Rigidur H square edge board + 100mm solid CLT panel + 12.5mm British Gypsum Rigidur H square edge board + 12.5mm British Gypsum Rigidur H tapered edge board.

NOTES:
 This drawing should only be used for its intended purpose. Permission from Streif is required before passing on to third parties or using for alternative means.

DATE: 13/08/21

SCALE: NTS

DRAWN BY: XL

CHECKED: TW & BT

PROJECT: Internal

DWG NO: SD-WA-001



DWG NAME: Streif - Standard Wall Types External & Internal

STATUS: N/A

REVISION: 0

13/08/21	First Issue	0
DATE	COMMENTS	REV

Streif UK Ltd. Metro House, Chichester, PO19 1BE
 T: 01243 790075 E: info@streif.co.uk