

# WALL PANEL SYSTEM



STREIF now offers the widest range of closed and advanced wall panels in the offsite timber frame industry, combining German engineering with British design.

The solid timber framework is manufactured under controlled factory conditions and comes fully insulated and boarded, ready for taping and jointing, with the windows and doors already fitted.

Any external finish is possible from cavity brickwork, to cavity-less render systems, to timber cladding, to tile hanging, to terracotta rain screens – the choice is endless.

The solid timber framework is strong, very strong – at a minimum of 140mm x 60mm, C24 graded, Scots Pine, PEFC, 15% ( $\pm 3\%$ ) moisture content, and fully treated it ticks all the boxes.

And strength means only using British Gypsum fibreboard for the internal linings, which is twice as dense, twice as hard and twice as strong as standard plasterboard.

And it also means only using slow grown German Scots Pine, which is tighter grained, more durable and stronger than the industry standard of faster grown Spruce.

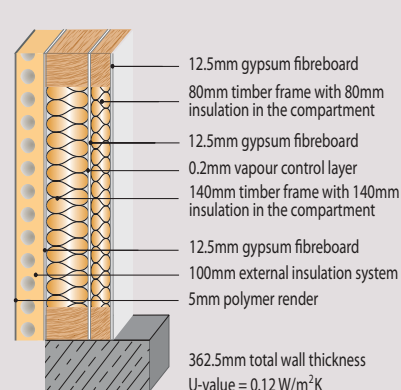
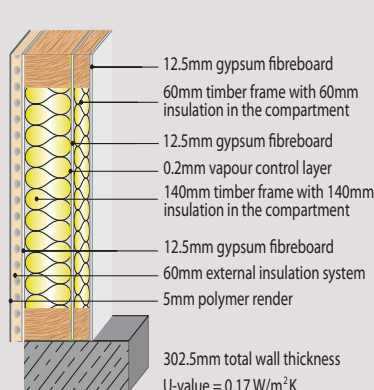
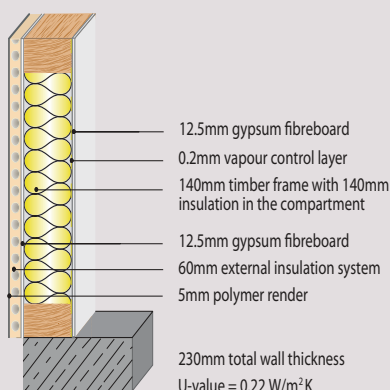
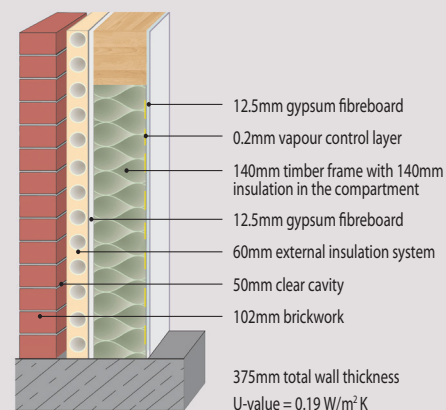
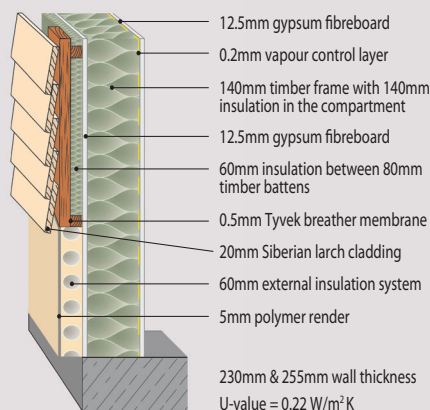
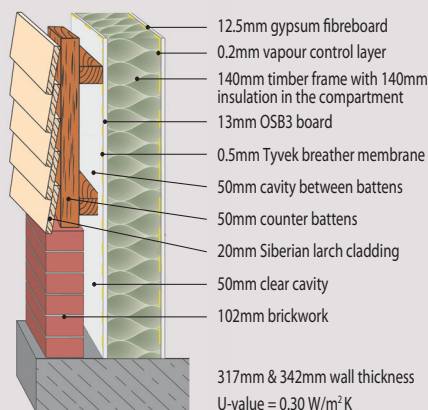
The system is quick, very quick – with our highly trained crews all the fully finished internal and external walls of a typical three bedroom house would go up in a day, meeting the highest levels of quality and safety.

U-values go from  $0.30 \text{ W/m}^2\text{K}$  down to  $0.12 \text{ W/m}^2\text{K}$ , and there's a choice of finishes, insulation and wall build-ups, with excellent air tightness as standard.

So it's easy to see why STREIF wall panels could be the answer to your offsite needs.

STREIF – “Building quality quickly”

# WALL PANEL SYSTEM



## Technical Specifications

- 100% PEFC timber product.
- Wolmanit CX10 timber treatment.
- Panel sizes up to 13m long & 3m high.
- Studs 60mm x 140mm, soles 80mm x 140mm, heads 100 x 140mm minimum.
- Solid timber construction, not lightweight engineering.
- Dense gypsum fibreboard, not lightweight plasterboard.
- Pre-insulated and boarded, closed panels.
- Better strength, stability & fire resistance.
- Better acoustic performance.
- Higher thermal mass and air quality.
- Supply only, supply & training, or full supply & fix with crane.
- Very rapid installation rates – a house in a day.
- Zero site waste & better site safety.
- Full structural calculations supplied.

## Options available include –

- Single, double or triple external wall skins systems.
- Any U-value from 0.30 W/m²K to 0.12 W/m²K.
- Mineral wool, wood fibre or EPS insulation.
- Brick cavity, rendered, timber clad, tile hung or rain screen systems.
- With or without windows and doors fitted.
- Upvc, timber, aluminium, or comporsite aluminium windows.
- Any acoustic performance from RW = 45, to RW = 80 dB.
- Any fire resistance from 30 to 90 minutes.
- Glulam and steelwork integrated within the wall panels.
- Electrical back boxes and conduits fitted.
- Bespoke openings for M & E services.

