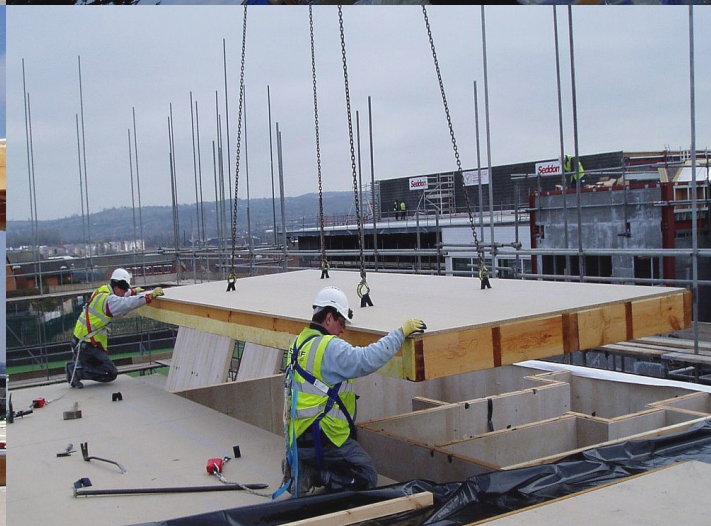


FLOOR CASSETTE SYSTEM



STREIF's heavy duty floor cassette system now provides an attractive alternative to lightweight timber or heavy concrete systems in upper storey floor construction.

The timber floor cassettes are manufactured under controlled factory conditions to provide a robust and completely level platform, ready to receive floor coverings or secondary systems.

The solid timber joists are strong, very strong - at a minimum of 240mm x 60mm, C24 graded, Scots Pine, PEFC, 15% ($\pm 3\%$) moisture content, and fully treated they tick all the boxes.

The floor cassettes are also large, very large - single cassettes can be up to 13m long and 2.5m wide, and using STREIF's special connection system almost limitless spans are possible.

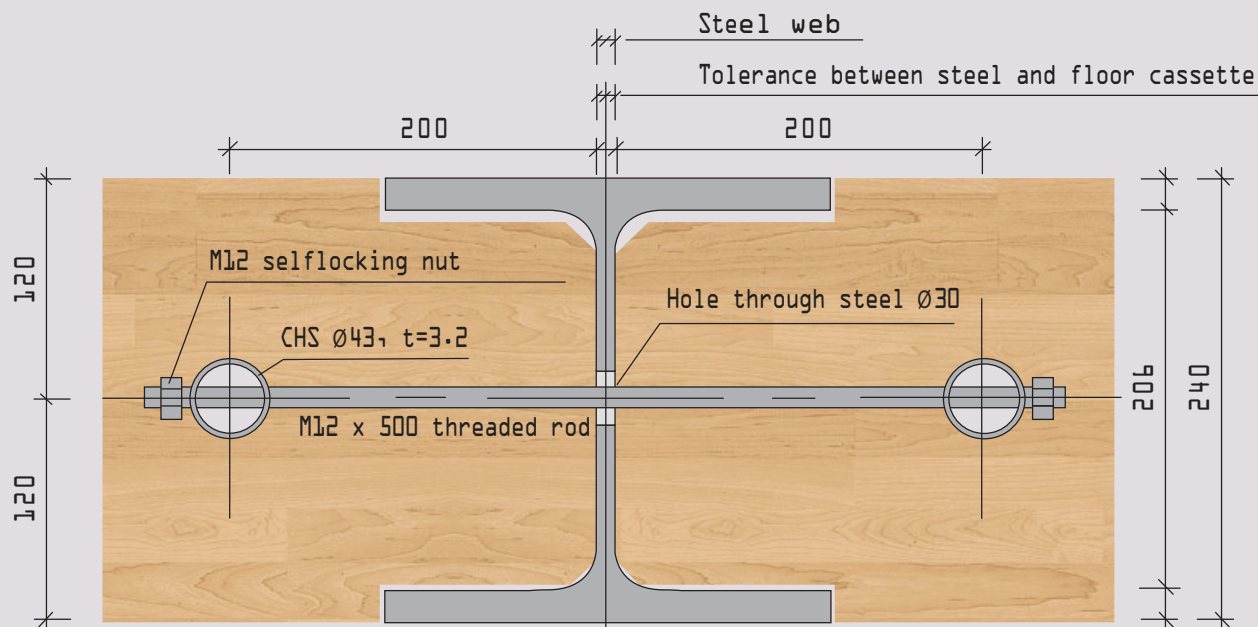
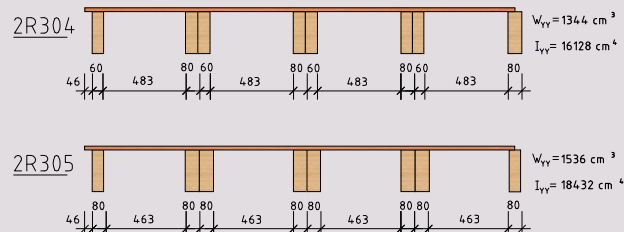
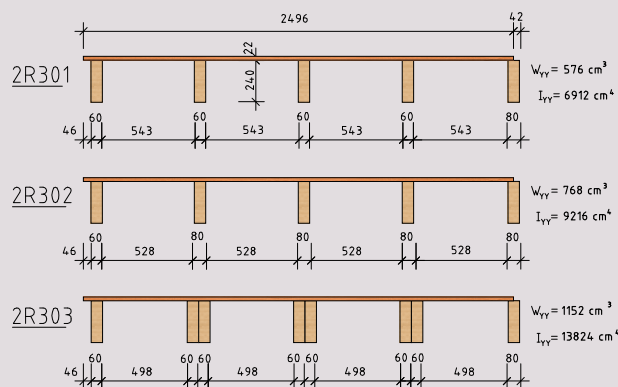
And the system is quick, very quick - with our highly trained crews up to 1,000m² of floor cassettes can be installed in a day, always meeting the highest levels of quality and safety.

It's also no longer necessary to specify a concrete floor if a screeded finish is required. STREIF's floor cassettes system is routinely designed to accept full sand & cement screeds in line with the market requirement in Europe.

Plus the system isn't just limited to timber frame construction - it's equally suitable for masonry and steel frame construction. It also avoids the problems of camber and weight associated with concrete systems, and the problems of stability and fire resistance associated with lightweight timber systems.

STREIF - "Building quality quickly"

FLOOR CASSETTE SYSTEM



Technical Specifications

- 100% PEFC timber product.
- Wolmanit CX10 timber treatment.
- Cassette sizes up to 13m x 2.5m.
- Solid timber construction, not lightweight I-joists or Posi-joists.
- Better strength, stability & fire resistance.
- Better load bearing capacity - can take sand & cement screeds.
- Supply only, supply & training, or full supply & fix with crane.
- Suitable for timber frame and masonry construction types.
- Built in lifting straps for craneage and crew safety harnesses.
- Very rapid installation rates - up to 1,000m² a day.
- Zero site waste & better site safety.
- Full structural calculations supplied.

Options available include -

- 22mm OSB 3, WBP plywood or P5 chipboard flooring.
- Pre-insulation with up to 240mm mineral wool or EPS.
- Multiple joist configurations to take the highest loads.
- Special in-line steelwork system to connect cassettes.
- Pre-drilling of timber joists to accept M & E services.
- Glulam joists for cantilevered designs, including balconies.
- Breather membranes on cassette ends for greater air tightness.
- Fire protection and acoustic design.

